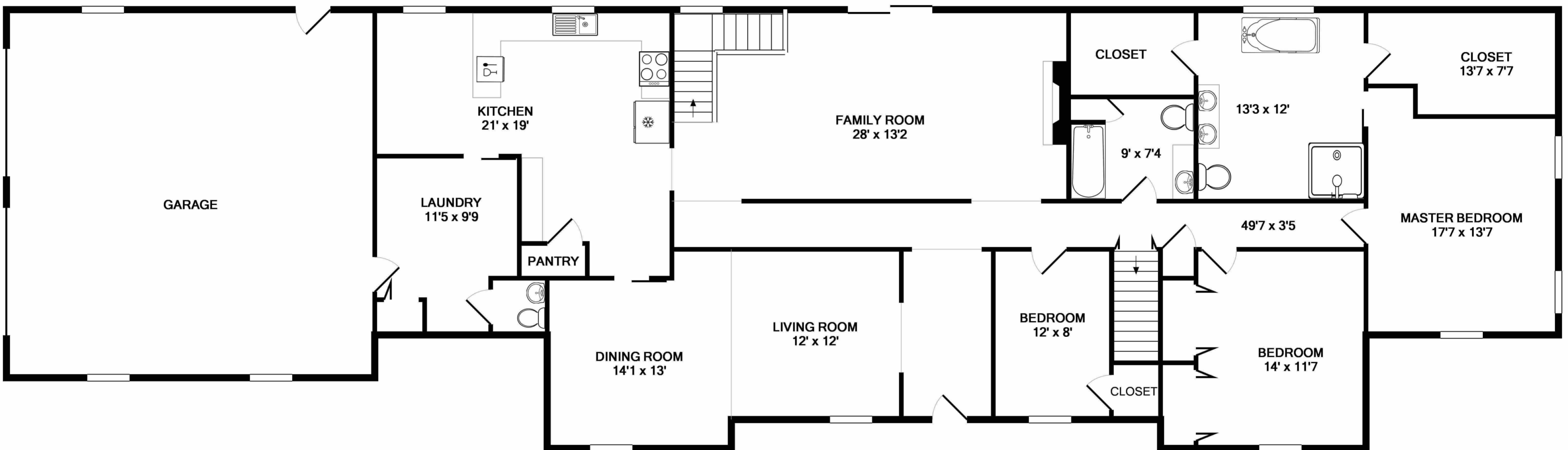
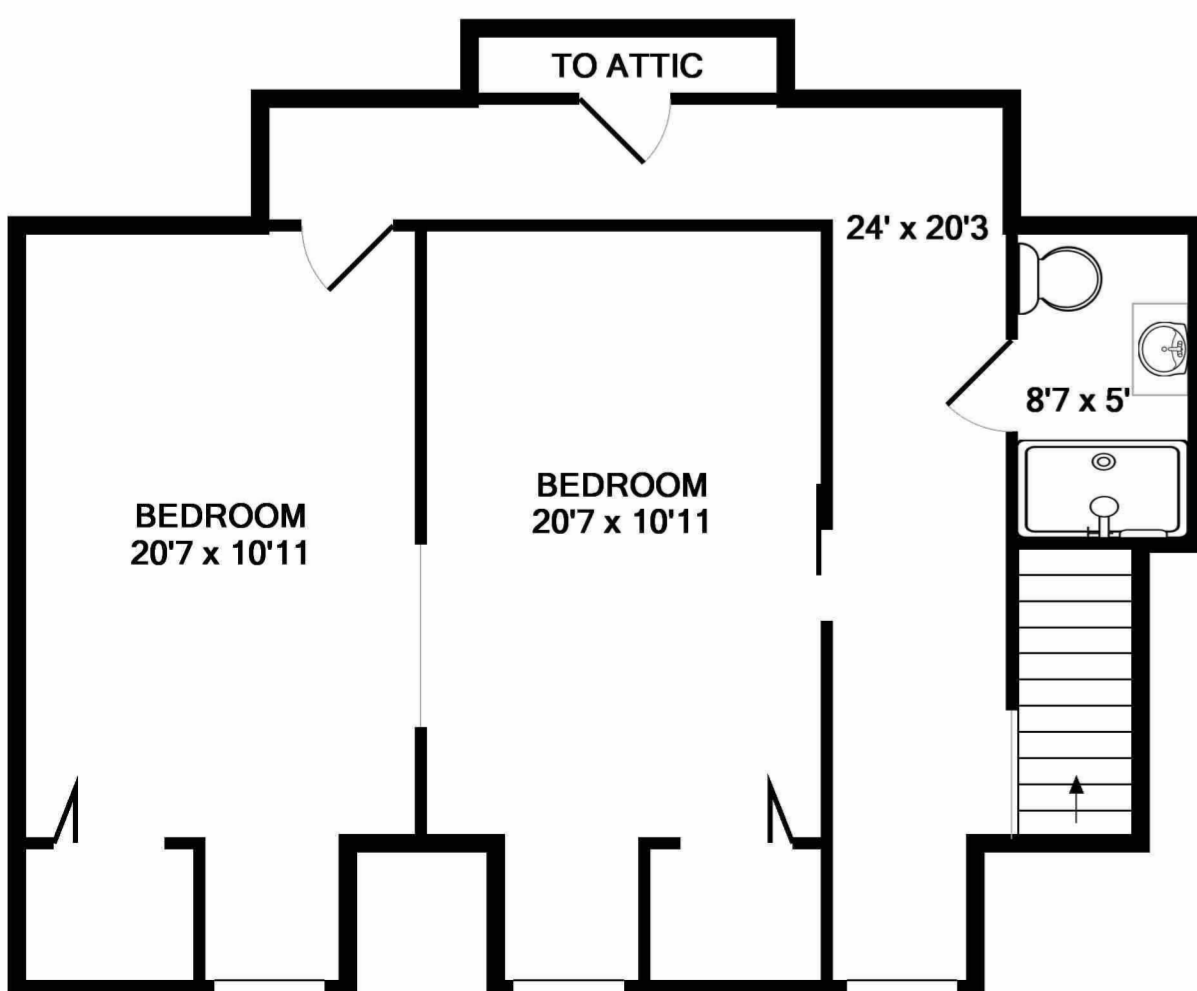


BASEMENT LEVEL
APPROX. FLOOR
AREA 2316 SQ.FT.
(215.1 SQ.M.)



GROUND FLOOR
APPROX. FLOOR
AREA 2996 SQ.FT.
(278.4 SQ.M.)



2ND FLOOR
APPROX. FLOOR
AREA 690 SQ.FT.
(64.1 SQ.M.)

TOTAL APPROX. FLOOR AREA 6002 SQ.FT. (557.6 SQ.M.)